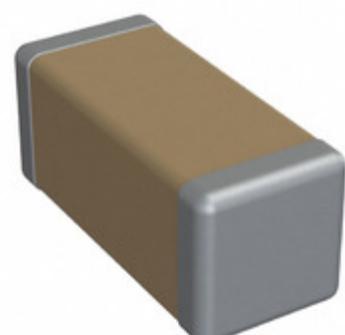


1808J0500681KDT



Part Number: [1808J0500681KDT](#)
Manufacturer: [Knowles Syfer](#)
Description: CAP CER 680PF 50V X7R 1808
Data sheet: [MLCC High Reliability Datasheet](#)

RoHS Status: Lead free / RoHS Compliant
Ship From: Hong Kong
Shipment Way: DHL/Fedex/TNT/UPS/EMS

Images are for reference only.
 See Product Specifications for product details.
 Buy 1808J0500681KDT with confidence from
 Component-World.HK, 1 Year Warranty

[Request For Quotation](#)

PRODUCT PARAMETER

Part Number	1808J0500681KDT	Manufacturer	Knowles Syfer
Description	CAP CER 680PF 50V X7R 1808	Lead Free Status / RoHS Status	Lead free / RoHS Compliant
Quantity Available	96956 pcs	Data sheet	MLCC High Reliability Datasheet
Category	Capacitors	Voltage - Rated	50V
Tolerance	±10%	Thickness (Max)	0.079" (2.00mm)
Temperature Coefficient	X7R	Size / Dimension	0.177" L x 0.079" W (4.50mm x 2.00mm)
Series	-	Ratings	-
Packaging	Tape & Reel (TR)	Package / Case	1808 (4520 Metric)
Operating Temperature	-55°C ~ 125°C	Mounting Type	Surface Mount, MLCC
Moisture Sensitivity Level (MSL)	1 (Unlimited)	Manufacturer Standard Lead Time	8 Weeks
Lead Style	-	Lead Spacing	-
Lead Free Status / RoHS Status	Lead free / RoHS Compliant	Height - Seated (Max)	-
Features	High Temperature	Failure Rate	-
Detailed Description	680pF ±10% 50V Ceramic Capacitor X7R 1808 (4520 Metric)	Capacitance	680pF
Applications	High Reliability		

Component-World.com is a Reliable Stocking Distributor of Electronic Components. We specialize in all Knowles Syfer series electronic components. We have 96956 pieces of Knowles Syfer 1808J0500681KDT in stock available now. Request a quote from electronics components distributor at Component-World.com, our sales team will contact you within 24 hours.
 RFQ Email: info@Components-World.com

RELATED PRODUCTS

	Part#: 1808J0500681KXR Description: CAP CER 680PF 50V X7R 1808	Manufacturers: Knowles Syfer	RFQ
	Part#: 1808J0500682FCT Description: CAP CER 6800PF 50V C0G/NP0 1808	Manufacturers: Knowles Syfer	RFQ
	Part#: 1808J0500681MDT Description: CAP CER 680PF 50V X7R 1808	Manufacturers: Knowles Syfer	RFQ
	Part#: 1808J0500681JFR Description: CAP CER 680PF 50V C0G/NP0 1808	Manufacturers: Knowles Syfer	RFQ
	Part#: 1808J0500681JCT Description: CAP CER 680PF 50V C0G/NP0 1808	Manufacturers: Knowles Syfer	RFQ
	Part#: 1808J0500681KCR Description: CAP CER 680PF 50V C0G/NP0 1808	Manufacturers: Knowles Syfer	RFQ
	Part#: 1808J0500681MXR Description: CAP CER 680PF 50V X7R 1808	Manufacturers: Knowles Syfer	RFQ
	Part#: 1808J0500681JXR Description: CAP CER 680PF 50V X7R 1808	Manufacturers: Knowles Syfer	RFQ
	Part#: 1808J0500681KDR Description: CAP CER 680PF 50V X7R 1808	Manufacturers: Knowles Syfer	RFQ
	Part#: 1808J0500681JDT Description: CAP CER 680PF 50V X7R 1808	Manufacturers: Knowles Syfer	RFQ
	Part#: 1808J0500681JFT Description: CAP CER 680PF 50V C0G/NP0 1808	Manufacturers: Knowles Syfer	RFQ
	Part#: 1808J0500681JDR Description: CAP CER 680PF 50V X7R 1808	Manufacturers: Knowles Syfer	RFQ
	Part#: 1808J0500681KFT Description: CAP CER 680PF 50V C0G/NP0 1808	Manufacturers: Knowles Syfer	RFQ
	Part#: 1808J0500682FCR Description: CAP CER 6800PF 50V C0G/NP0 1808	Manufacturers: Knowles Syfer	RFQ
	Part#: 1808J0500681KFR Description: CAP CER 680PF 50V C0G/NP0 1808	Manufacturers: Knowles Syfer	RFQ
	Part#: 1808J0500681MXT Description: CAP CER 680PF 50V X7R 1808	Manufacturers: Knowles Syfer	RFQ
	Part#: 1808J0500681KXT Description: CAP CER 680PF 50V X7R 1808	Manufacturers: Knowles Syfer	RFQ
	Part#: 1808J0500681KCT Description: CAP CER 680PF 50V C0G/NP0 1808	Manufacturers: Knowles Syfer	RFQ
	Part#: 1808J0500681JXT Description: CAP CER 680PF 50V X7R 1808	Manufacturers: Knowles Syfer	RFQ
	Part#: 1808J0500681MDR Description: CAP CER 680PF 50V X7R 1808	Manufacturers: Knowles Syfer	RFQ

Related keywords for 1808J0500681KDT

Knowles Syfer 1808J0500681KDT	1808J0500681KDT distributor	1808J0500681KDT supplier	1808J0500681KDT price
1808J0500681KDT download datasheet	1808J0500681KDT datasheet	1808J0500681KDT stock	buy 1808J0500681KDT
Knowles Syfer 1808J0500681KDT	Syfer 1808J0500681KDT		